

EVs & Local Government

Kristian Handberg
Manager – Electric Vehicles

8 August 2016

Energy in
action.®

Since 1937

AGL



Where it all began

Vic Govt EV Trial 2010-13

2

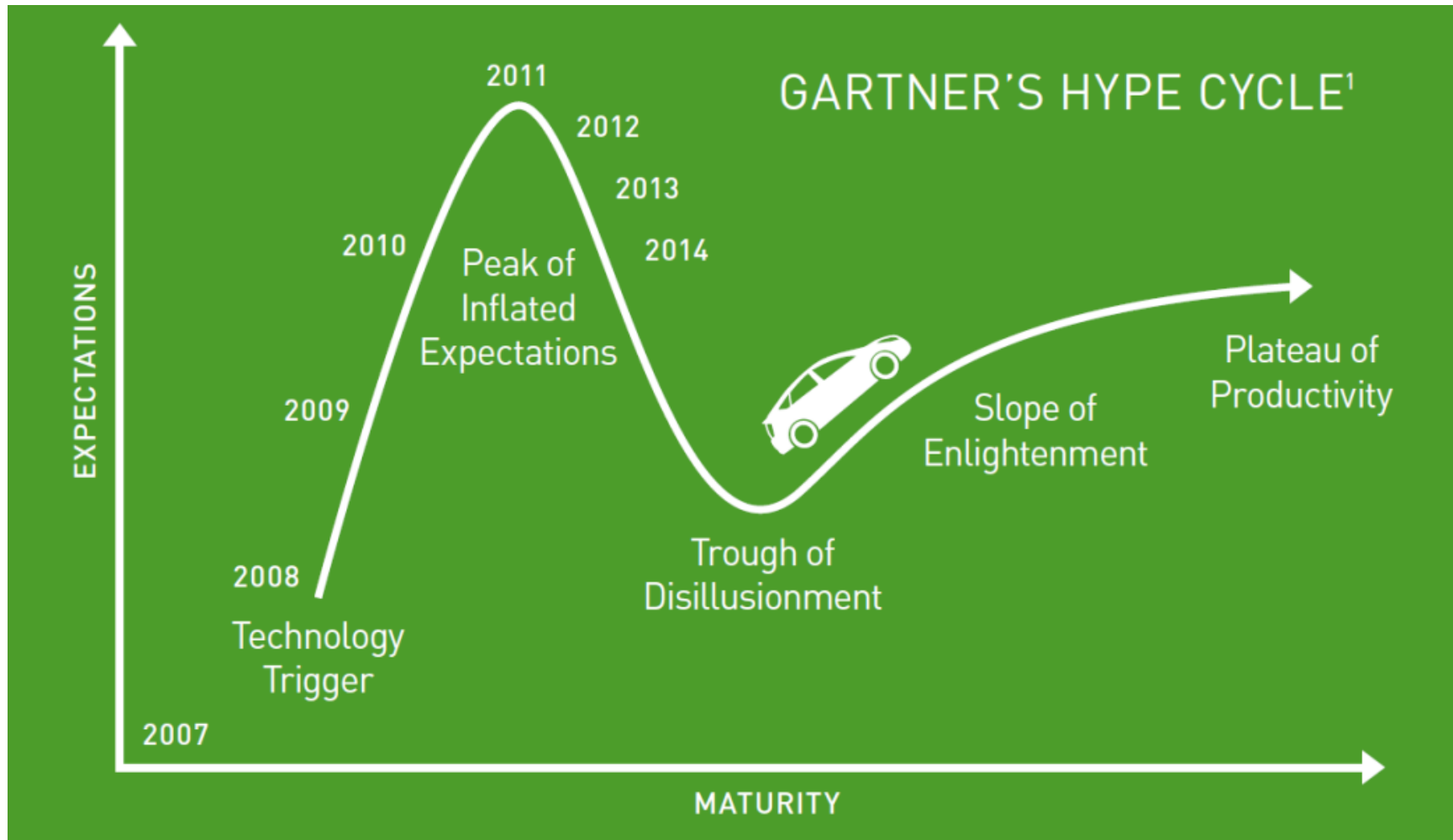


- > EVs & Local Govt
- > 8 August 2016

Heading in the right direction

EV market drivers and indicators are on track

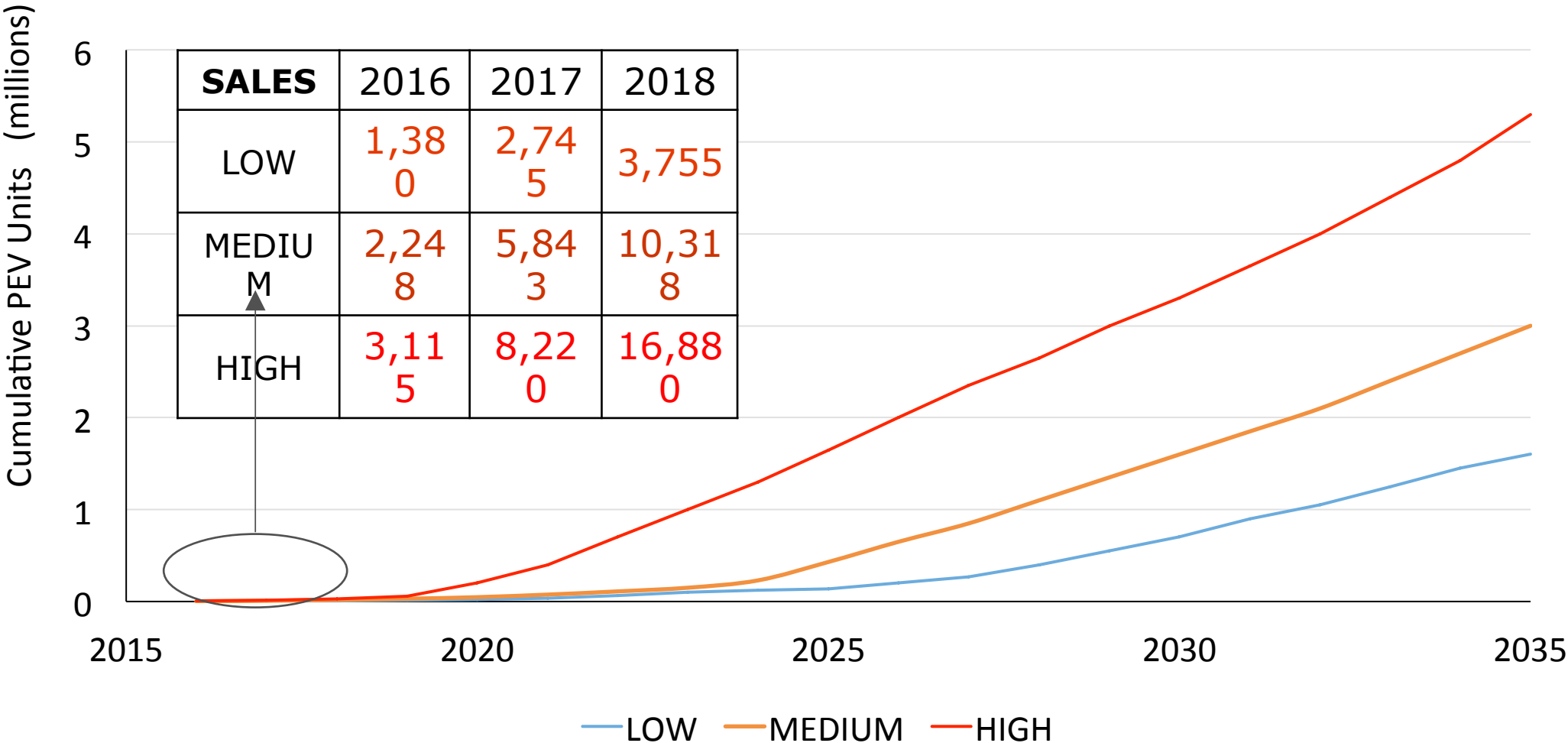
3



- > EVs & Local Govt
- > 8 August 2016

Australian EV market forecasts

Policy support has been and will continue to be critical



Stakeholders getting organised

National EV Council on the cusp of re-launch

THE PATH FORWARD FOR
ELECTRIC VEHICLES IN
AUSTRALIA

STAKEHOLDER RECOMMENDATIONS
APRIL 2016















- > EVs & Local Govt
- > 8 August 2016

<http://goo.gl/GvKMHj>

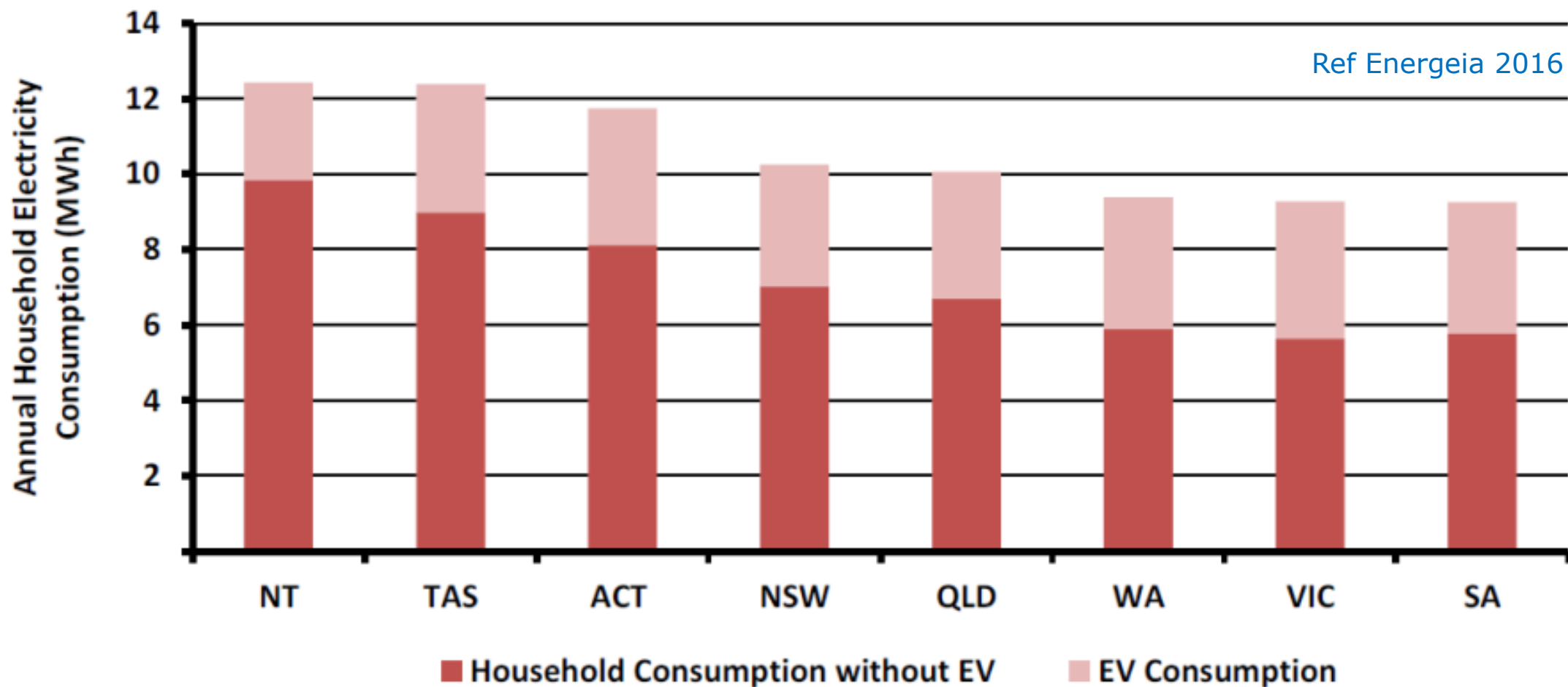
Energy in
action.[®]

Since 1837


Why EVs #1 = Increased load

EVs are the last major load likely to be added into the NEM

6



- > EVs & Local Govt
- > 8 August 2016

Why EVs #2 = Attract & retain customers

People love cars

7



Energy in
action.®

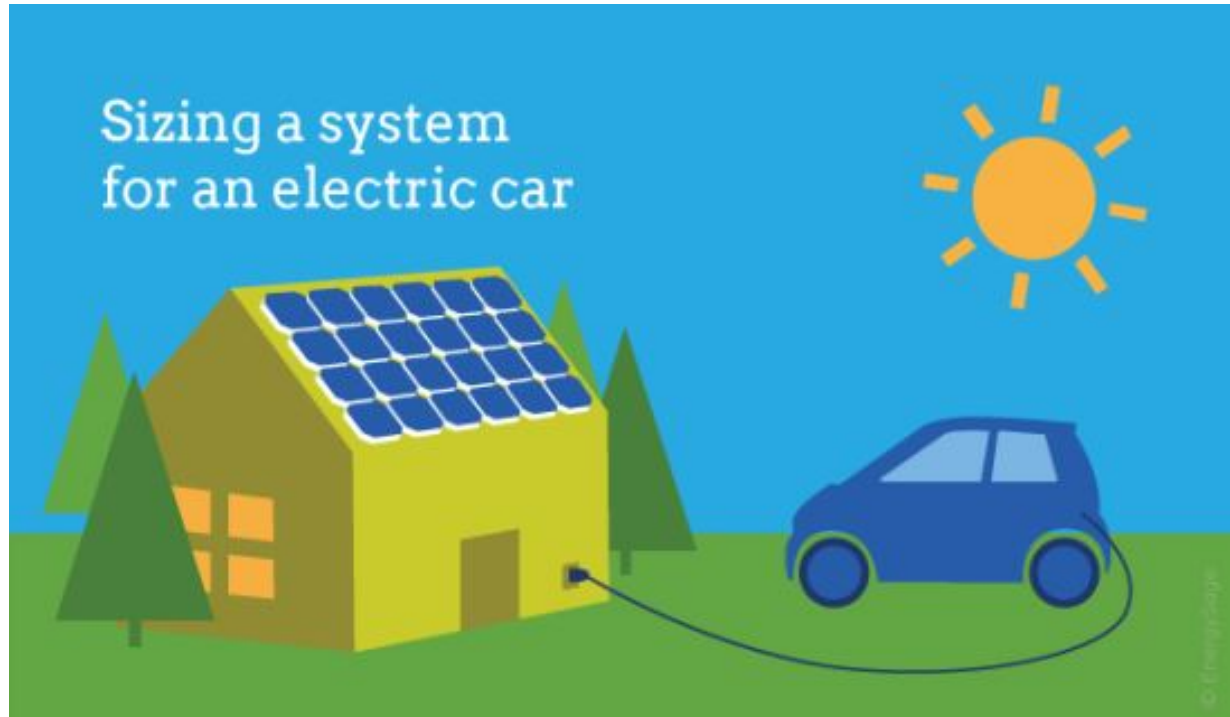
Since 1837

AGL

Why EVs #3 = Distributed Energy Resources

EVs are batteries on wheels

8



What we're doing #1 = Business customer solutions

Making EVs easy for business

9



- > EVs & Local Govt
- > 8 August 2016

Energy in
action.

Since 1837

AGL

What we're doing #2 = Home charging offer

Raising awareness with a mainstream value proposition

10



Understanding solar

Switching to solar

Solar with AGL

Solar monitoring

1300 377 118

AGL's EV concierge service and capped charging plan.

AGL will soon offer a \$1/day, unlimited km, zero emissions Electric Vehicle (EV) home charging plan*. Regardless of how much the customer charges their vehicle, the most they'll pay is \$1 per day or \$365 for a whole year's electric-powered driving.

AGL will provide a concierge service to help people through the EV customer journey with a charging solution and energy plan tailored to their needs.

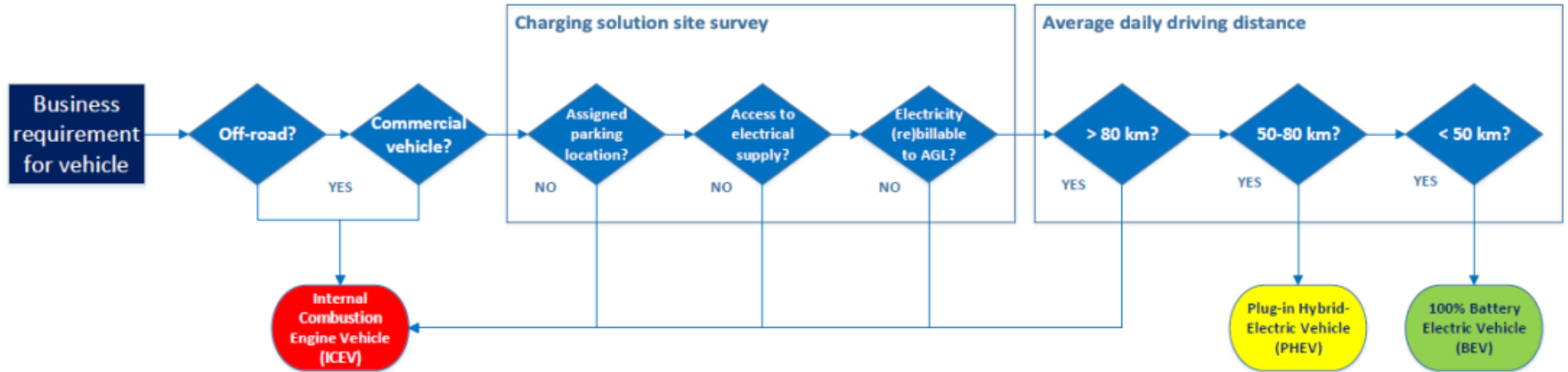


- > EVs & Local Govt
- > 8 August 2016

What LG can do #1 = Fleet uptake

AGL fleet will be 10% plug-in by mid-2018

11



- > EVs & Local Govt
- > 8 August 2016

What LG can do #2a = Public charging infrastructure

Raise awareness, understanding and acceptance in your local community

12



Expression of Interest

Electric Vehicle (EV) Charge Station Installations

Closes: 5:00pm Friday 22 July 2016

1. INTRODUCTION

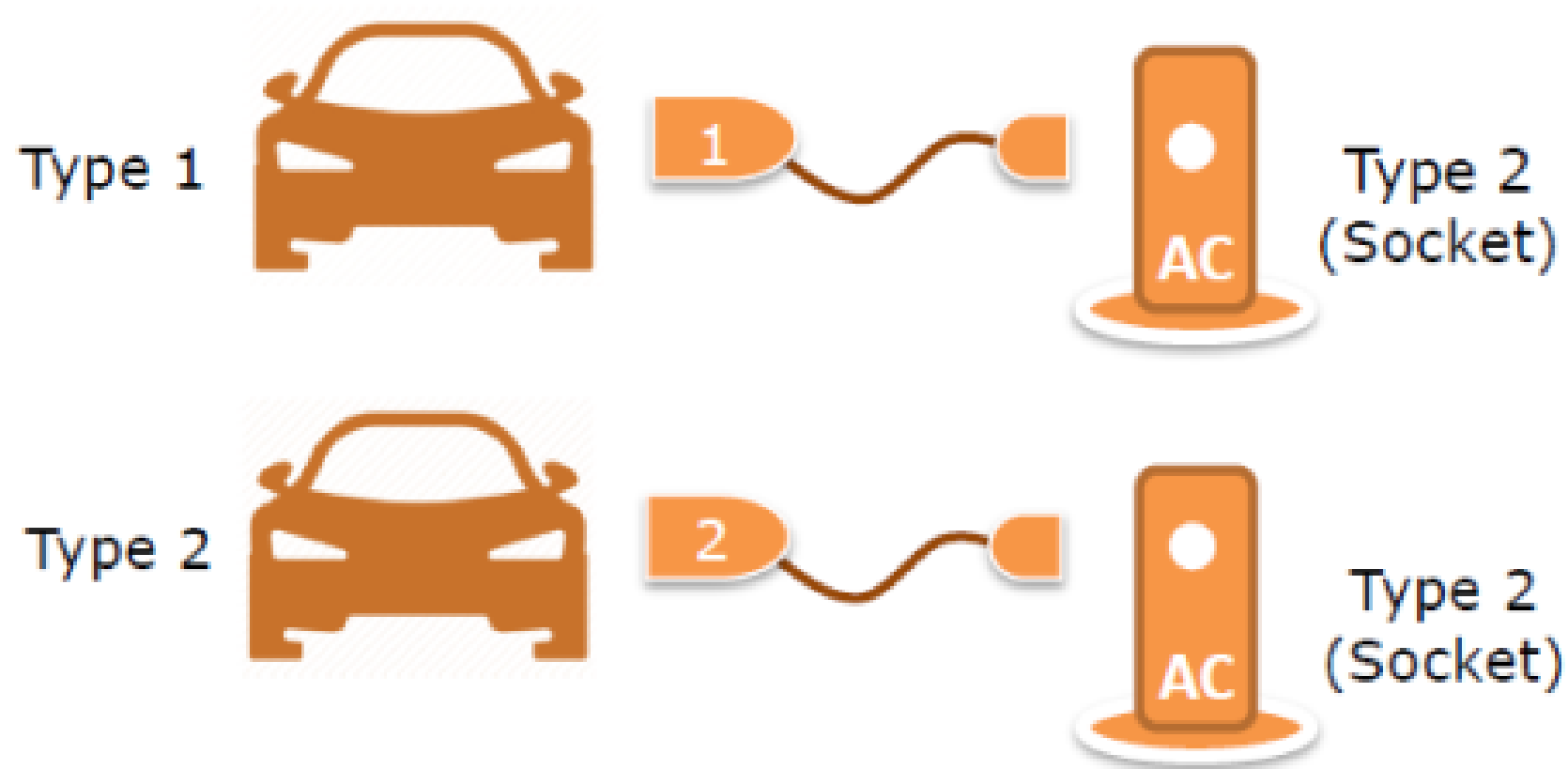
The Waverley, Woollahra, and Randwick Councils (the 3-Councils) are seeking to encourage EV uptake in the Eastern Suburbs by supporting the development of electric vehicle charging infrastructure. This is based the recommendations made in the 3-Council Low Carbon Future Plan (December 2015), which aims to implement significant projects that reduce local carbon emissions by 30% by 2031 compared to 2011 levels.

- > EVs & Local Govt
- > 8 August 2016

What LG can do #2b = Public charging infrastructure

Provision for the future

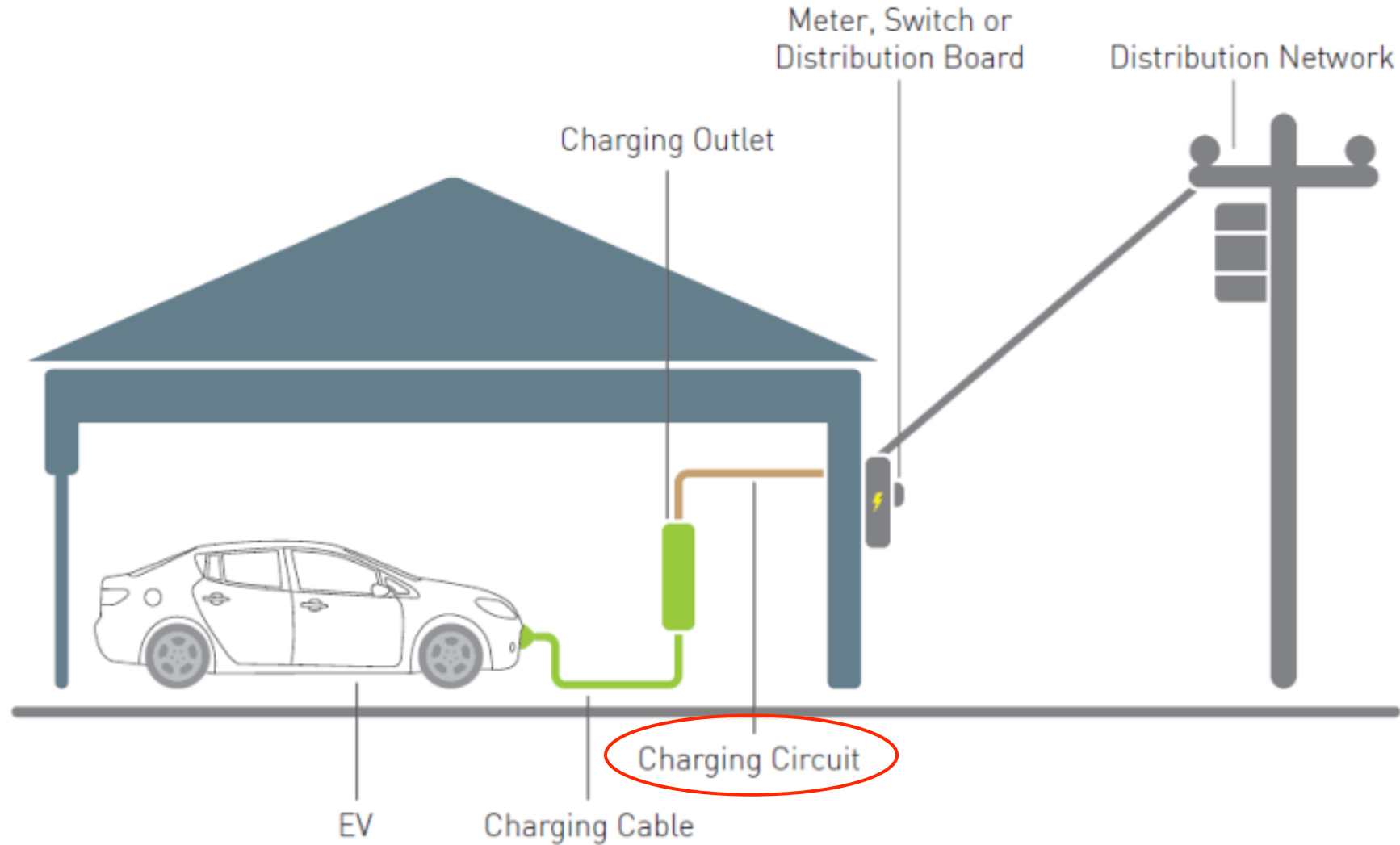
13



What LG can do #3 = EV-ready buildings

Basic circuit for Greenfield sites & re-furb's

14



- > EVs & Local Govt
- > 8 August 2016

Want to know more?

Contact me via one of the means listed below

15



khandberg@agl.com.au

or via **Linked in**